



Notice of Exemption

21-2026-004

Filing Requested By and When Filed Return To:
Marin Municipal Water District
220 Nellen Ave
Corte Madera, CA 94925
Attn: Paul Sellier, Water Resources Director

FILED

JAN 08 2026

SHELLY SCOTT
MARIN COUNTY CLERK
BY: *[Signature]*, Deputy

Project Title: Nicasio Creek Emergency Activities Project

Project Location: The Project site is located along Nicasio Creek near its confluence with Halleck Creek, next to the Town of Nicasio, Marin, 94946 (APN: 121-230-024)

Project Location – County: Marin

Project Description: The Marin Municipal Water District proposes targeted removal of wood jams within the Nicasio Creek channel and trimming of vegetation that has encroached into the channel to restore flow and reduce localized blockages. The proposed live vegetation trimming would be selective, primarily occurring on branches with a diameter of 4 inches or less. This project covers short term, immediate needs for Nicasio Creek to implement mitigation actions that reduce the extent of flooding to public and private infrastructure, with a focus on public safety, protecting public roadways for emergency access/egress, and the Nicasio Elementary School and surrounding private residences. Wells and septic systems within these properties are particularly vulnerable to flooding caused by blockages within Nicasio Creek. The current condition of Nicasio Creek poses an imminent threat to public safety, risks disruption of school operations, and endangers critical private infrastructure.

Public Agency Approving Project: Marin Water, 220 Nellen Ave. Corte Madera, CA 94925

Name of Person or Agency Carrying Out Project: Paul Sellier, 415-945-1557

CEQA Exemption Status: Emergency Project [CEQA State Guidelines, Section 15269 (b) and (c)]

Reason for Exemption: The primary purpose of the project is to reduce localized flooding risks that threaten public facilities and adjacent properties, including Nicasio Elementary School, and surrounding private residences. Removal of the accumulated wood and vegetation (log jams) from the creek is necessary to or mitigate flooding that could disrupt emergency response services and damage critical infrastructure and homes. Wells and septic systems on adjacent properties are vulnerable to flooding caused by blockages within Nicasio Creek. The current condition of Nicasio Creek poses an imminent threat to public safety, including disruption of school operations, and poses a significant risk of private property infrastructure (loss of septic systems and wells). Further delays in protection of private property and public services (e.g., time required to undertake the study and detailed environmental review) would create an unacceptable risk to public health, safety, and welfare given the existing condition of Nicasio Creek. For these reasons, the project meets the exemption criteria under CEQA Guidelines Section 15269, Emergency Projects, (b) and (c).

Project Approval: The Marin Municipal Water District General Manager approved the filing of the permit application and the completion of the work, which represents project approval as defined by Section 15352 of the Guidelines for Implementation of the California Environmental Quality Act.

Lead Agency Contact Person: Paul Sellier, Marin Municipal Water District

Telephone: 415-945-1557

1-8-2026

Paul Sellier, Water Resources Director

Date

POSTED 1/8/2026 TO 2/7/2026

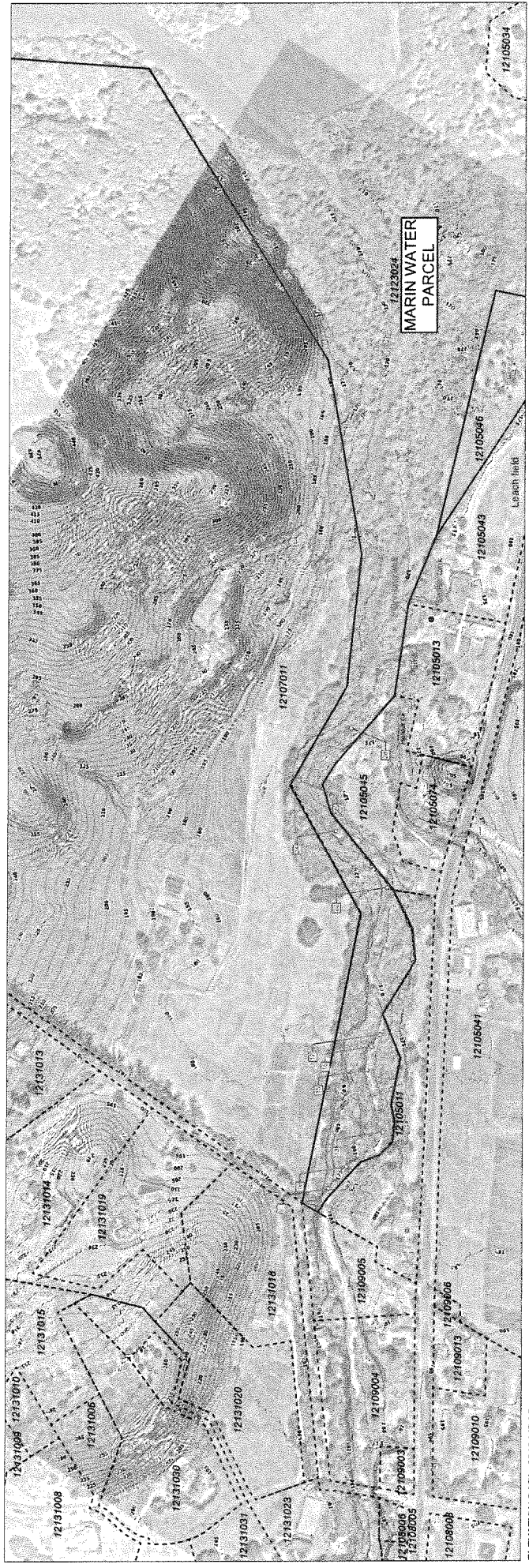
Figure 1: Nicasio Creek Emergency Activities Project Area

Figure 2: Nicasio Creek Emergency Activities Project High Priority Locations



Figure 1
Nicasio Creek Emergency Activities
Project Area





NICASIO CREEK

ELEVATION DATA: 2018 LIDAR

Location	Feature	Observation	Recommendation
9	Wood Jam	Bar apex jam at floodplain side channel inlet	Cut 4" diameter (or less) live tree stems to release debris from jam
10	Trees located in channel	12" diam willow tree cluster rooted on channel bed	Cut 4" diameter (or less) live stems shown to near bed level
13	Encroached Vegetation	Narrow channel section	Cut 4" diameter (or less) live willow on LB floodplain bar. Cut 4" diameter (or less) live willow on RB to bank toe line.
15	Wood Jam	Debris racked on live down willow tree	Cut 4" diameter (or less) live slumped tree stems to release debris from jam
16	Wood Jam	Debris racked in slumped live willow tree	Cut 4" diameter (or less) live slumped tree stems to release debris from jam
17	Fine sediment deposition	Slow channel flow caused by narrow channel and dense vegetation downstream	Cut 4" diameter (or less) live LB and RB willow to bank toe line
22	Encroached Vegetation	Slow channel flow caused by narrow channel and dense vegetation downstream	Cut 4" diameter (or less) live LB and RB willow to bank toe line
24	Encroached Vegetation	Channel spanning wood jam	Cut 4" diameter (or less) live LB and RB willow to bank toe line
25	Wood Jam	Channel spanning wood jam	Cut channel spanning log into mobile size pieces to release debris from jam
28	Encroached Vegetation		Cut 4" diameter (or less) live LB and RB willow to bank toe line